

# Just prove it. Spectroquant® Prove

Simplify water analysis with  
a new class of **spectrophotometers**



The life science business of Merck KGaA,  
Darmstadt, Germany operates as  
MilliporeSigma in the U.S. and Canada.

**MILLIPORE  
SIGMA**

# Just perfect. spectroquant® prove

Our goal was to build the perfect tool for water analysis, one that unites the simplicity you want with the confidence you need, and the durability you expect. Spectroquant® Prove delivers all this and more. Its intuitive design and our popular Spectroquant® test kits make analysis smoother than ever. Spectroquant® Prove. It just makes your work flow.

## Long-life Lamp

### Brilliant durability and economy

The new reference beam technology in Spectroquant® Prove instruments minimizes the effort and costs of replacing lamps. Hence, the halogen lamp in the Prove 100 lasts significantly longer, while the special xenon lamp in the Prove 300 and 600 offers a lifetime of several years combined with the flexibility of UV/Vis analysis - even under intense use.

## Smart Screen

### Simple, seamless menu navigation

Have complete control at your fingertips with our interactive Smart Screen and intuitive icons.

- Method and result lists for easy documentation and data access
- Touchscreens in the Prove 100 and 300 and glass touchscreen in the Prove 600 are resistant to most lab chemicals
- System menu in 28 built-in languages

## Custom Measurements

### Easy adjustments for every need

Several modifications can be made easily using the settings icon, for example:

- Simultaneous display of absorption and concentration values
- Turbidity correction
- Add the dilution factor for each sample

## Individualized Measuring Ranges

### Set your own limits

The Prove allows to set your individual ranges to monitor results within limits, to visualize expected ranges and to simplify your trend analyses.

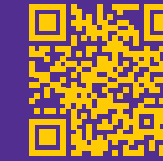
## Data Exchange

### Facile, fast and flexible transfers

You have multiple ways to easily utilize your data:

- USB and Ethernet port - to connect your printer or memory device
- "Prove Connect to LIMS" allows you to import your results directly to your LIMS or ELN (Order no. Y1100860001)
- "Prove Connect to Dashboard" expands your connectivity by accessing your data via our dashboard service (Order no. Y1100850001).

More information on [SigmaAldrich.com/proveconnect](http://SigmaAldrich.com/proveconnect)



## Reagent Tests

### Minimum effort

This innovative Technology - unique to MilliporeSigma - makes reagent testing truly simple and totally reliable. All you have to do is insert the AutoSelector and rectangular cell. Prove does the rest. It automatically recognizes the cell size, detects the analysis method, and calculates results accordingly.



## Maximum sensitivity

Every Prove model recognizes 16 mm round cells as well as 10, 20, 50 mm rectangular cells. For even greater sensitivity, the Prove 600 is compatible with 100 mm cells. Simply remove the round cell holder and insert your 100 mm cell. Now you can accurately detect the lowest analyte concentrations.

## Easy Cleaning

### Durable, removable components

Intelligent design makes it easy to keep your Spectroquant® Prove in top form - even if something is spilled into the sample compartment. Simply remove the cell holder, rinse it with water, wipe it clean, and it's ready for your next analysis.



## Compactness

### A small beauty in your lab

Dimensions: W 42 cm, D 28 cm, H 24 cm



[SigmaAldrich.com/spectroquant](http://SigmaAldrich.com/spectroquant)



# Just Prove it. UNCOVER MORE

## Cell Test Port

### Just insert, prove and proceed

Spectroquant® Prove offers direct insertion of round cell tests without opening any lids, so you have both hands free to focus on the job at hand.



## Spectroquant® Test Kits

Not just more choices.  
More confidence.

Spectroquant® Prove is preprogrammed for over 180 Spectroquant® test kits and methods, giving you swift, reliable results for the broadest range of applications.

[SigmaAldrich.com/test-kits](http://SigmaAldrich.com/test-kits)

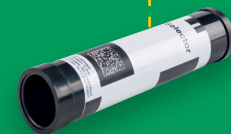
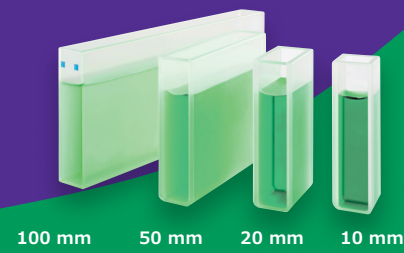
## Live ID

### A new dimension in traceability

Live ID is the new, data-rich identification system on all our cell and reagent tests. Unlike other barcodes, it not only transfers more data, but "live" data – thanks to automatic, complimentary calibration updates. This means your results are always correct and fully traceable. Live ID also saves time. Just insert the test, Prove reads the code, detects the method, and selects the right settings. Test-specific lot and expiry data are saved with each result to simplify documentation and streamline audits.



- Method recognition
- Lot number
- Expiry date
- Calibration update



## Cell Tests

For maximum convenience, our cell tests include all the reagents you need for your analysis, so they are ready to use straight out of the box.

## Reagent Tests with AutoSelector

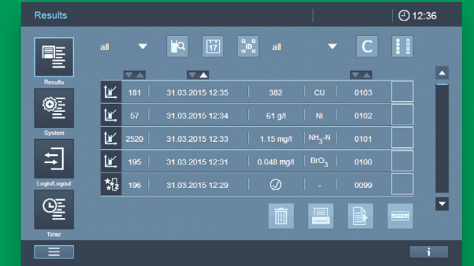
These economical kits contain highly stable reagent mixtures, and allow you to choose the cell format that suits your measuring range. An AutoSelector with a Live ID code is also provided in each kit.



## Data on Demand

### Customizable data for easy documentation

- Enjoy maximum flexibility in minimum steps
- Access all your results from a clear, concise list
- Select your desired filter option (by date, keyword, method, user, etc.)
- Export data in your preferred form – from brief overview to complete protocol



## AQA Prime

### A new level of analytical standard

AQA Prime makes analytical quality assurance exceptionally reliable – and extremely easy.

- Clear overview of AQA status, information, updates, and options with one touch
- Select individual settings and measurements for each AQA
- Complete verification and documentation for all stages of quality control:

**AQA1** > Instrument check

**AQA2** > System check – now even easier because Spectroquant® Prove is preprogrammed for all Spectroquant® standards [SigmaAldrich.com/wfa-crm-standards](http://SigmaAldrich.com/wfa-crm-standards)

**Pipette Check** > Instrument-supported volume control



AQA1 information



AQA2 information



AQA1 activated



AQA2 activated

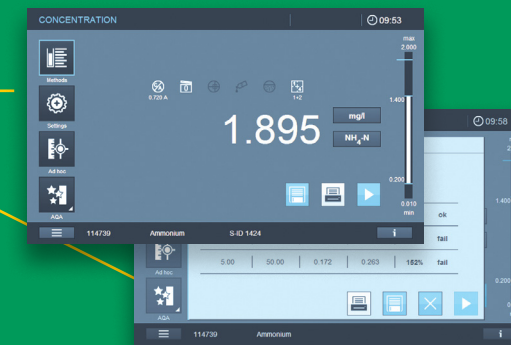


Pipette Check

## Matrix Check

### Easily detect interferences

The new Matrix Check makes it even easier to spot foreign substances in your samples. After your measurement, simply press the Settings icon, and select Matrix Check from the list. You will be clearly guided through the entire process.



## Preprogrammed Applications

### Free, additional methods to simplify your work

To further facilitate your analysis, Spectroquant® Prove offers free, preprogrammed application procedures, such as bromate in drinking water, ICUMSA and brewery methods.

[SigmaAldrich.com/wfa-applications](http://SigmaAldrich.com/wfa-applications)

## Robust Surfaces

### Built to endure lab chemicals

Spills and splashes happen no matter how careful you are. That's why the materials and design of Spectroquant® Prove are engineered to last and resistant to most chemicals used in labs.

# Made just for you. spectroquant® prove

100 | 300 | 600

## Spectroquant® Prove 100

Ord. No. 1.73016.0001



### For routine applications

The Prove 100 is the best choice for those who primarily use our broad range of Spectroquant® test kits, or only perform Vis measurements. High quality and great value for your daily analyses.

## Spectroquant® Prove 300

Ord. No. 1.73017.0001



### For sensitive measurements

Thanks to its long-lasting xenon lamp, the Prove 300 is ideal for more intensive use. What's more, it is capable of both UV and Vis measurements, so you have greater flexibility for more intricate analyses.

## Spectroquant® Prove 600

Ord. No. 1.73018.0001



### For complex analyses

Designed for high-end UV/Vis optics, and cuvettes of up to 100 mm, the Prove 600 packs great power into a compact size. Excellent resolution and sensitivity for use with test kits, complex kinetics or spectral measurements.

Specifications		Prove 100	Prove 300	Prove 600
Measuring technology	Spectrophotometer with reference beam technology	■	■	■
Wavelength range	Vis (320 – 1,100 nm)	■	■	■
	UV (190 – 320 nm)		■	■
Lamp type	Tungsten halogen lamp	■		
	Xenon flash lamp		■	■
Ambient light protection	Measurement with open shaft possible due to proprietary solution (patent pending)	■	■	■
Spectral bandwidth	4 nm	■	■	
	1.8 nm			■
Smart Screen Display	Resistive touchscreen	■	■	
	P-cap glass touchscreen			■
Live ID System	2-D Barcode recognition for cell tests and reagent tests	■	■	■
	Barcode contains lot, expiry, and calibration data; data stored with each measurement	■	■	■
Cell size	16 mm round cells, 10, 20 and 50 mm rectangular cells with automatic recognition	■	■	■
	100 mm rectangular cells with automatic recognition			■

# Application fields



## Wastewater



The Prove 100 is the perfect choice for routine Vis measurements. Add your wastewater sample to the cuvette/cell, insert cuvette/cell and read your results. The Spectroquant® portfolio offers a broad selection of COD and other test kits in multiple measuring ranges.



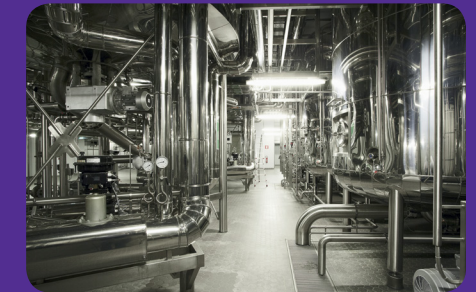
## Drinking water & beverages



The analysis of drinking water and beverages typically involves reagent tests since they offer lower detection limits for parameters, such as manganese and sulfate. The Prove 300 is ideal here, as it allows UV/Vis analyses, and is preprogrammed with free applications, like bromate and brewery tests.



## Process water



Even low levels of impurities in process water can lead to damages, downtime, and expensive repairs. To help you avoid these, we have developed the most sensitive silicate and chloride tests with the lowest measuring ranges in the market. For even greater sensitivity, use the 100 mm cell in the Prove 600.

# Application notes

Our photometric application notes offers a broad range of methods to support your production and analysis.

Whether you need to determine COD in wastewater, the level of nitrate in soils or the concentration of bromate in your drinking water - over 200 application notes supports your sample preparation and analysis.

Get the right application for all your analytical needs from [SigmaAldrich.com/wfa-applications](https://www.sigmaaldrich.com/wfa-applications).

# Just ask. Service and support

At MilliporeSigma, we understand the importance of reliable instruments, and the complexities of documentation. That's why we offer a comprehensive service plan that takes care of both.



## All Spectroquant® service plans offer the following features:

- **Performance check** with reference materials — certificate included
- **Factory-recommended maintenance** to prevent breakdowns
- **Telephone support hotline** connects you to our technical experts
- **Free software upgrades** to keep your instrument up-to-date
- **Reagent delivery program** for convenient, punctual supply of our high-quality test kits

Contact us for your personalized Spectroquant® service plan today:  
[EMDMillipore.com/water-analytics-service](https://www.emdmillipore.com/water-analytics-service).

We provide information and advice to our customers to the best of our knowledge and ability, but without obligation or liability. Existing laws and regulations are to be observed in all cases by our customers. This also applies in respect to any rights of third parties. Our information and advice do not relieve our customers of their own responsibility for checking the suitability of our products for the envisaged purpose.

**To place an order or receive  
technical assistance**

[SigmaAldrich.com/customersupport](https://SigmaAldrich.com/customersupport)  
[SigmaAldrich.com/techservice](https://SigmaAldrich.com/techservice)

[SigmaAldrich.com/prove](https://SigmaAldrich.com/prove)

**MilliporeSigma**  
290 Concord Road  
Billerica, MA 01821

