

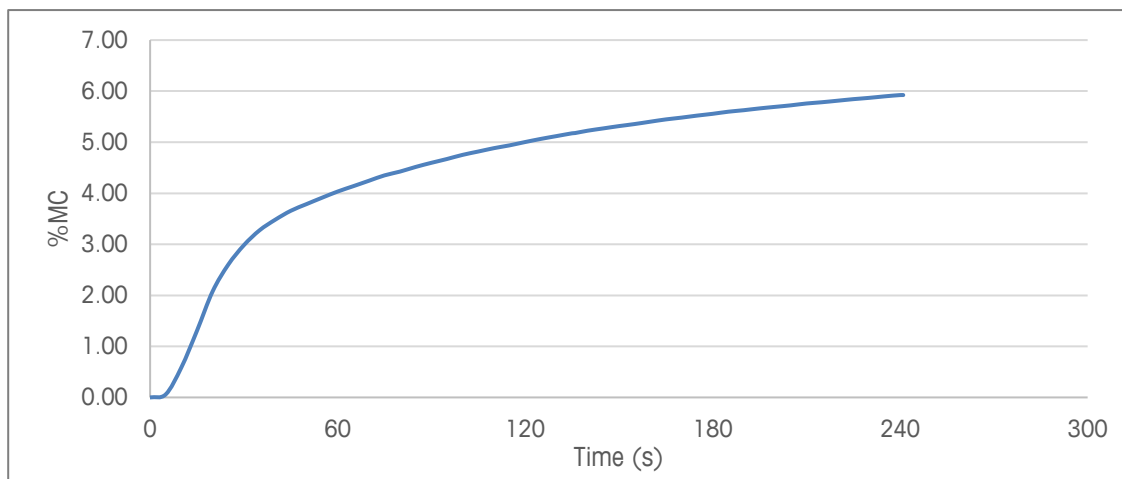
Moisture Determination

Hemp: Dr. Ganja Sour Space Candy

| Sample Description | |
|-------------------------|----------------------------------|
| Analysis | Moisture Content |
| Sample | Hemp: Dr. Ganja Sour Space Candy |
| Sample Characterization | Ground hemp flower |

| Method Parameters | | |
|----------------------------------|--|--|
| | Halogen Moisture Analyzer | Karl Fischer Titration |
| Drying program | Standard | Not applicable |
| Temperature | 70 °C | 90 °C |
| Switch-off criterion (SOC) | 2 (1 mg/20 s) | 30 min |
| Sample weight | 2 g | 0.1 g |
| Accessories | Aluminum sample pan | Glass vial |
| Sample preparation and procedure | Start predefined method, tare sample pan. Add sample, shake gently to distribute evenly on the sample pan | Put the samples into a temperature-controlled oven from where the evolved water is transferred to the titration cell via an applied nitrogen flow. |
| Comments | Method optimized for water content. Grind flower prior to measuring without causing loss of moisture | |
| Literature | METTLER TOLEDO recommended method | METTLER TOLEDO recommended method |

Drying Curve



Measurement Table

| | Halogen Moisture Analyzer | Karl Fischer Titration |
|-----------------------------|---------------------------|------------------------|
| Result (mean) | 5.92 %MC | 6.02 %MC |
| Standard deviation (SD) | 0.06 | 0.03 |
| Measurement duration (mean) | 4 min | 30 min |

Note

The intended use of this method datasheet is to serve as a basis for developing a moisture method for a specific sample. The method always needs to be optimized and confirmed for a specific sample.

Disclaimer

As the use and transfer of a method is beyond the control of METTLER TOLEDO, no responsibility of any kind can be taken. The general safety rules and precautions of the manufacturer (e.g. for chemicals or solvents) must be observed.